



[tips & tricks for modelmakers]

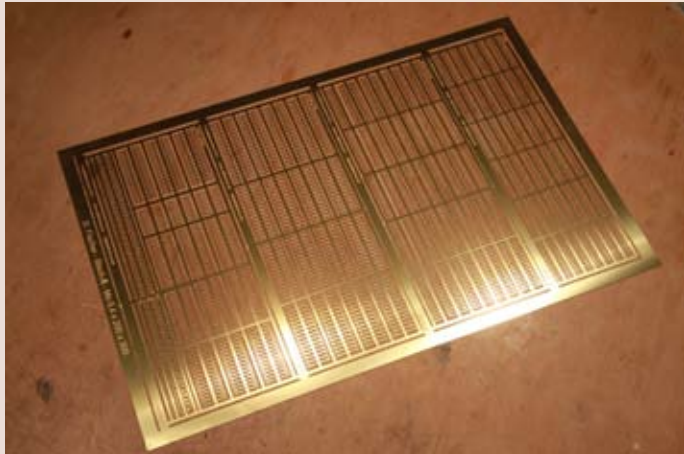
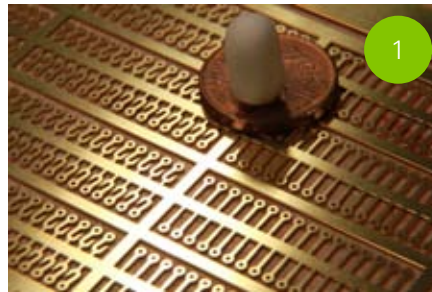


Plate 7

Eyebolts and hooks



The following sizes are available:

- 1 1,3 outside / 0,5 mm inside
- 2 1,6 outside / 0,75 mm inside
- 3 1,8 outside / 1 mm inside
- 4 2,0 outside / 1,25 mm inside



- 5 Clamps
2, 3, 4 mm



Required tools





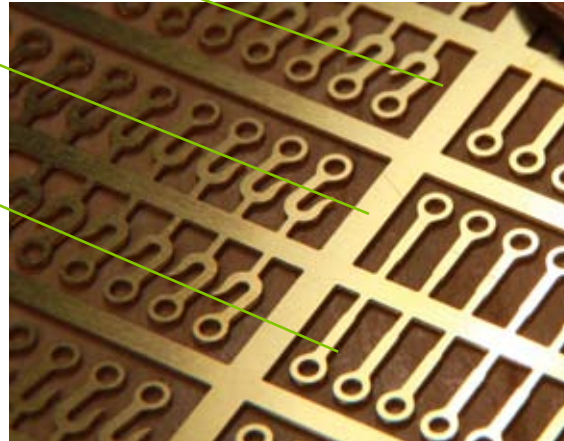
[tips & tricks for modelmakers]

Plate 7

Hooks and breaching rope rings



The hooks still need a twist of 90 degrees before being fixed.



If hooks are left after all the eyebolts are being used, simply cut off the hooked part at the green line and use as ring bolts!



As an alternative of using wire rings for the breaching rings, the eyebolts can be used.

Depending upon the ability of the model maker the result can be more even than using wire. Prepare a hole on the breech as a fixing point using a needle and cut a segment of the eyebolt and fit it in.





[tips & tricks for modelmakers]

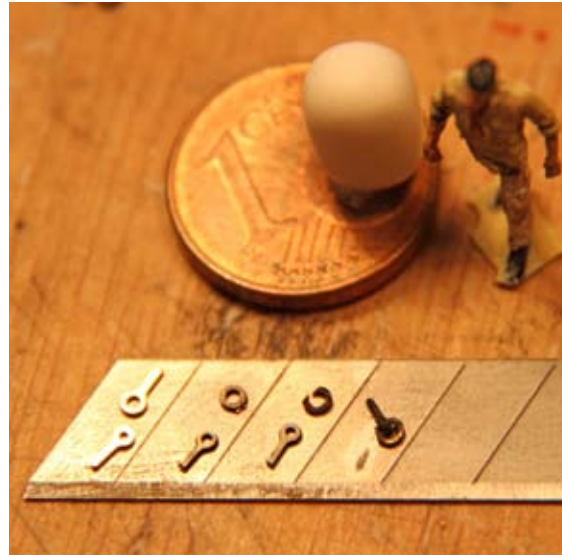
Plate 7

Eyebolts and rings

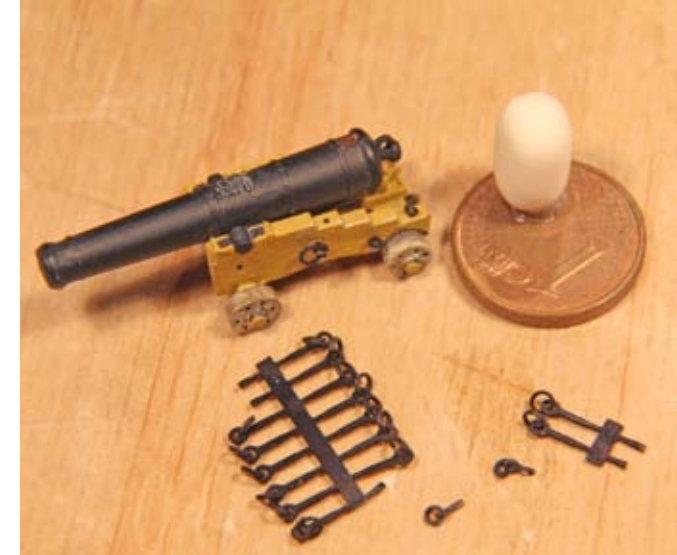
For easy assembly, just taking a ringbolt is sufficient. To get one step further, many of the ringbolts still had a ring added to it to better .



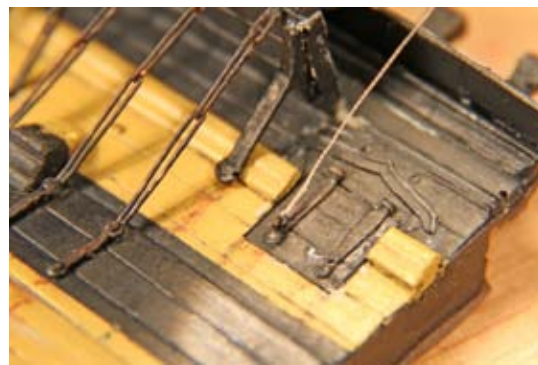
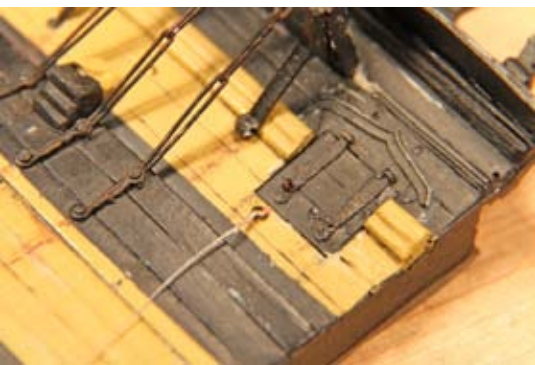
Take a wire of the needed diameter as core and bend another wire around it and cut the spiral into single rings. Open them sideways, stick them through the eyebolt and close it.



Or take a second eyebolt, cut off the pin, cut it open, bend it open sideways, stick them through the eyebolt and close it. This is a almost easier way as the spiral for rings is difficult to cut into single rings.



Here the guiding ring for the breeching rope.



Rings for the port lid lanyards and the the training tackles.